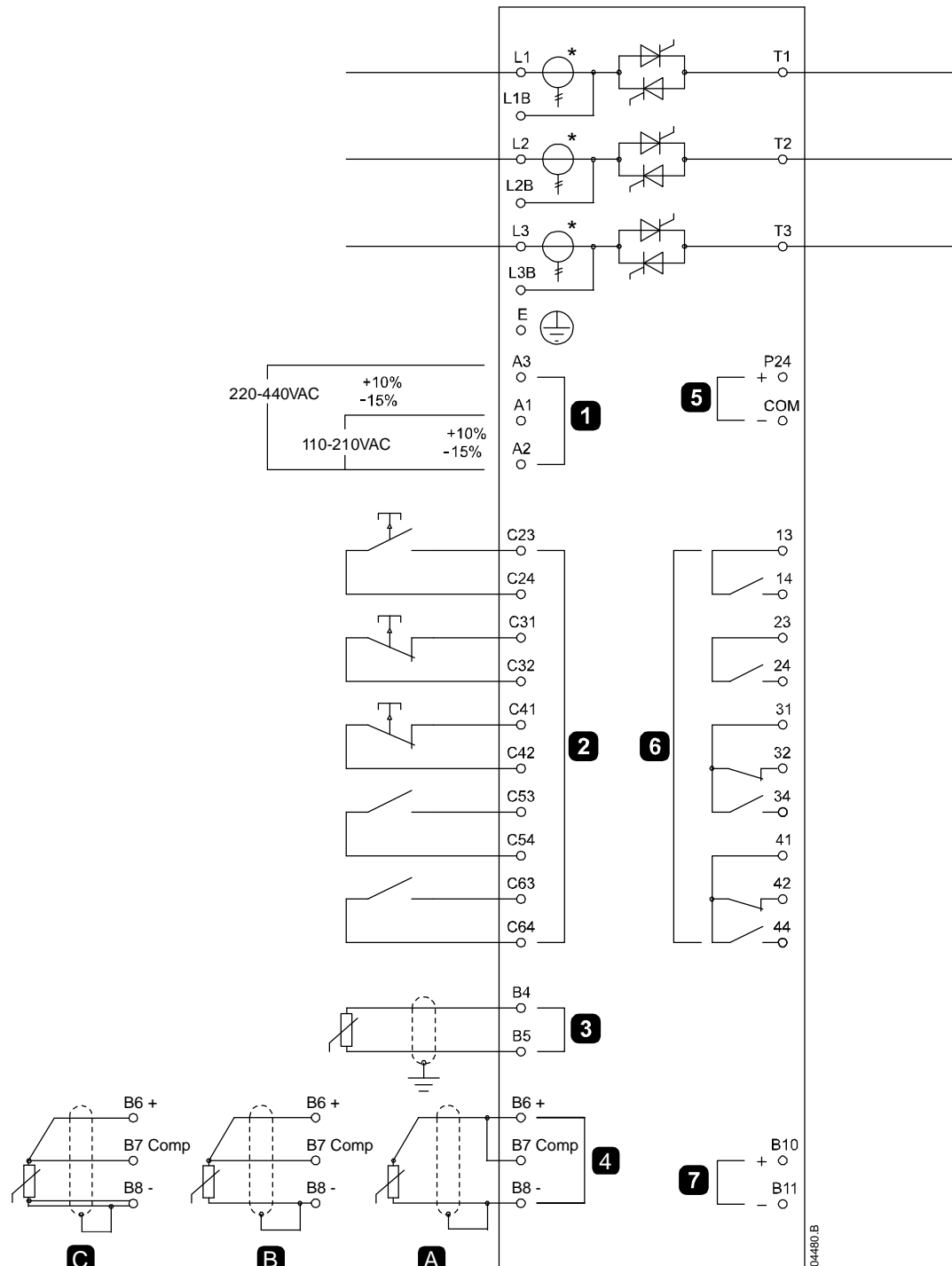


## Non-bypassed models



1	Control supply
2	Remote control inputs
3	Motor Thermistor input
4A	PT100 RTD input - 2 Wire
4B	PT100 RTD input - 3 Wire
4C	PT100 RTD input - 4 Wire
5	24 VDC output
6	Relay outputs
7	Analog output

C23-C24	Start
C31-C32	Stop
C41-C42	Reset
C53-C54	Programmable input A
C63-C64	Programmable input B
13-14	Relay output A
23-24	Run relay output
31, 32, 34	Relay output B
41, 42, 44	Relay output C



### NOTE

\* EMX3-0255C current transformers are located on the output. Bypass terminals are labelled T1B, T2B and T3B.